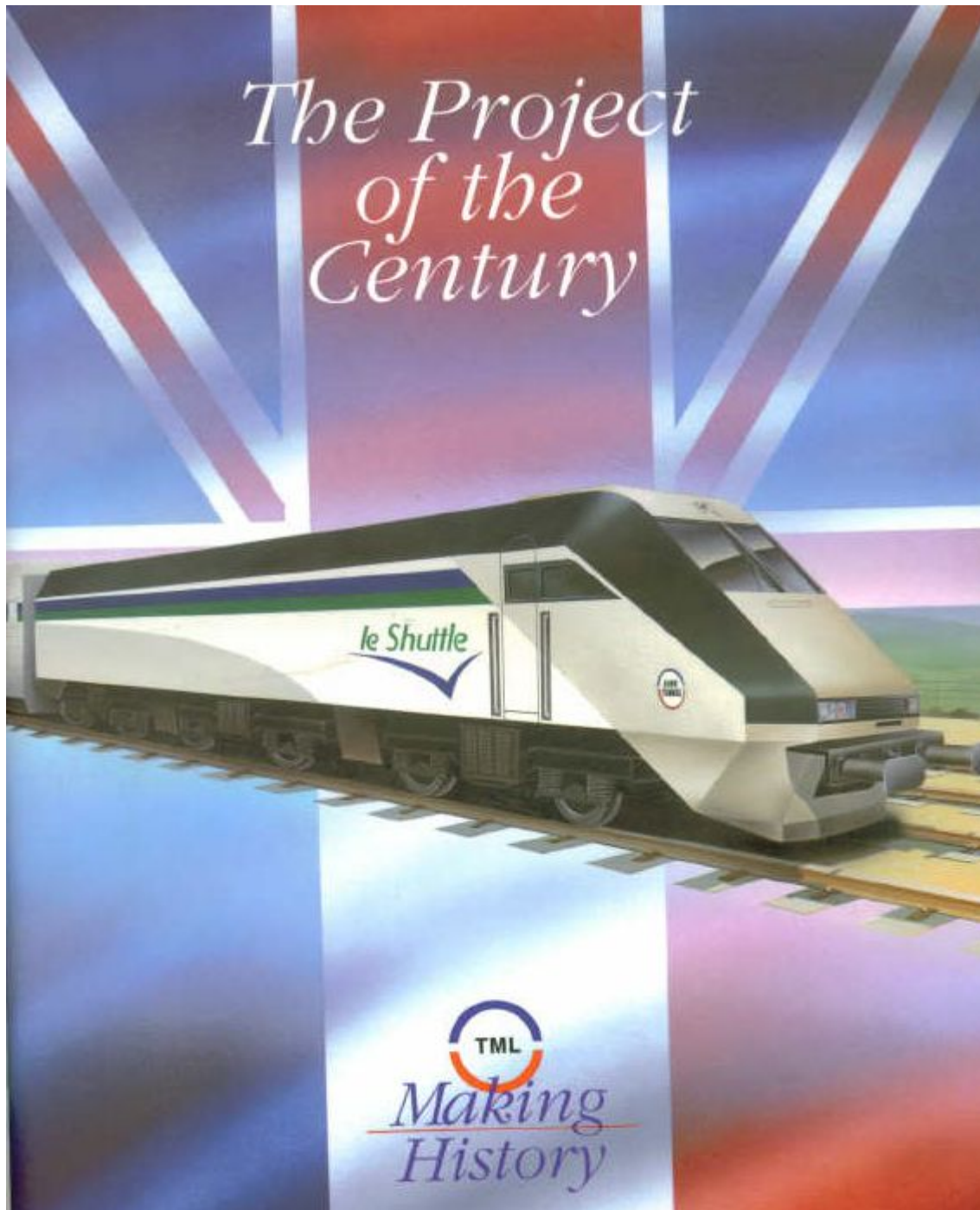


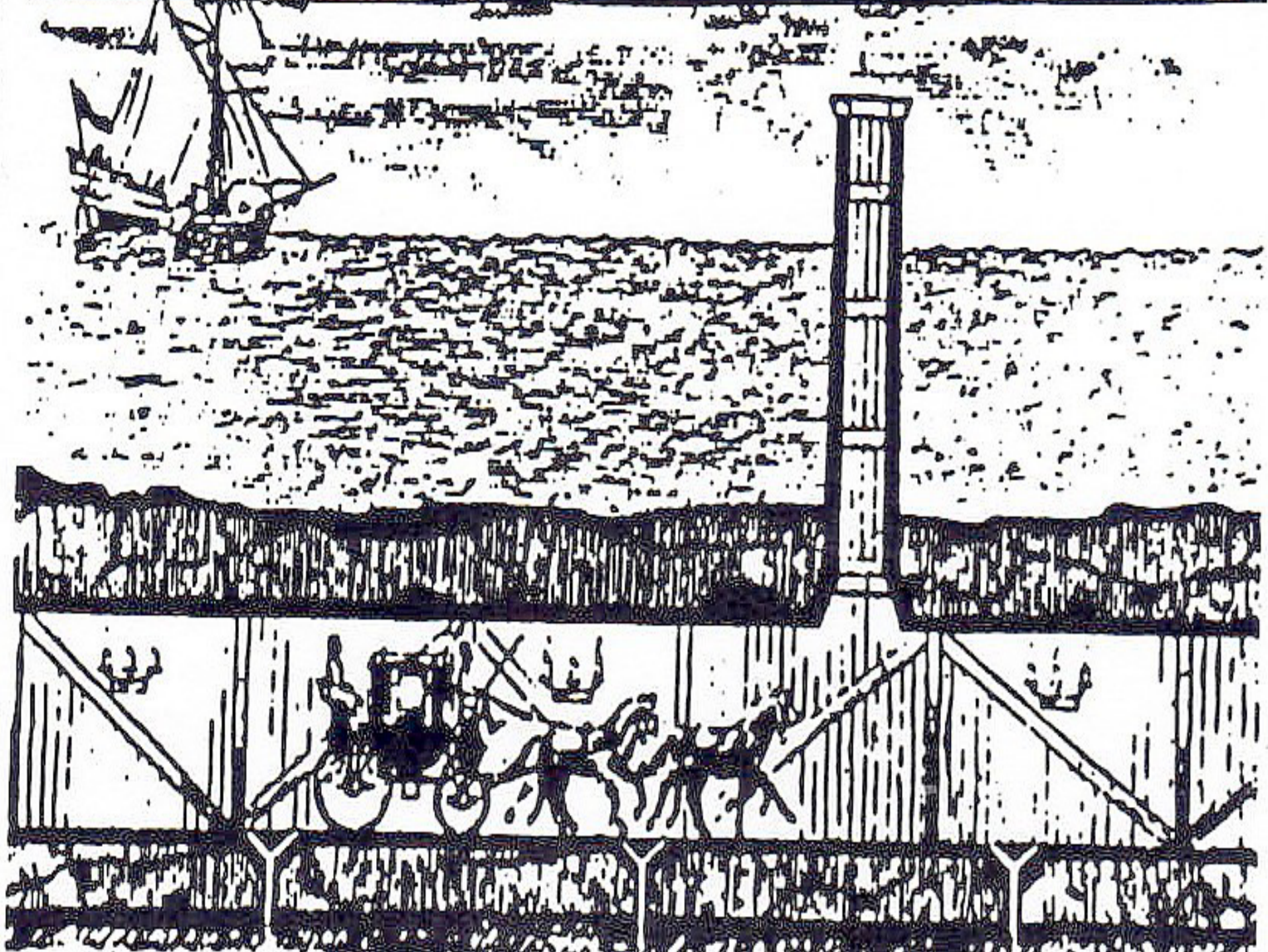
*The Project
of the
Century*

1988



1993


*Making
History*





Colonel BEAUMONT'S BORING MACHINE 1880

ODE to the TUNNEL

There'll be carloads of Louises

From Parisienne stripteases

Importing foul diseases

Into Kent.

There'll be modern French Wells Fargos

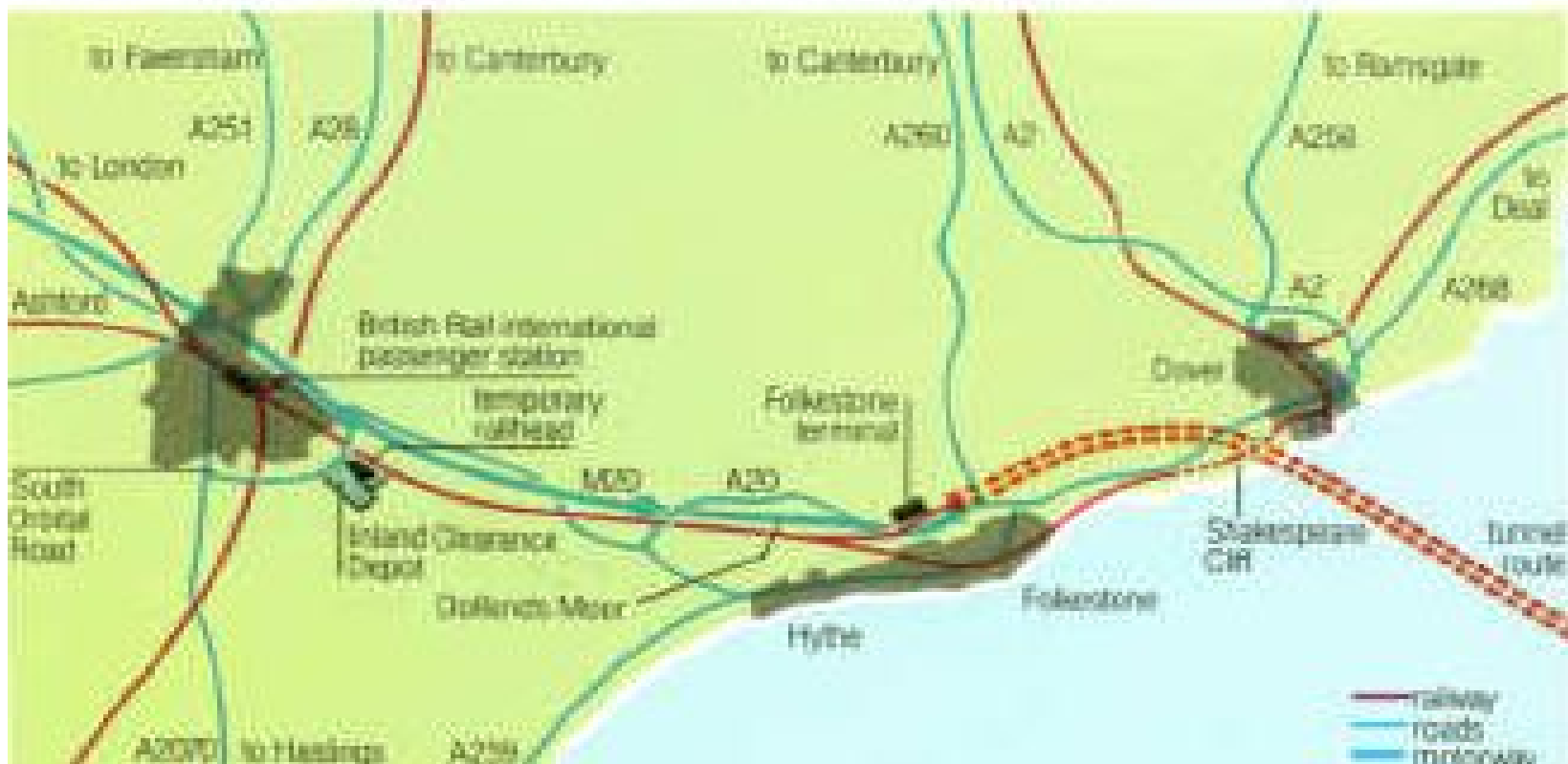
Sending juggernauts with cargos

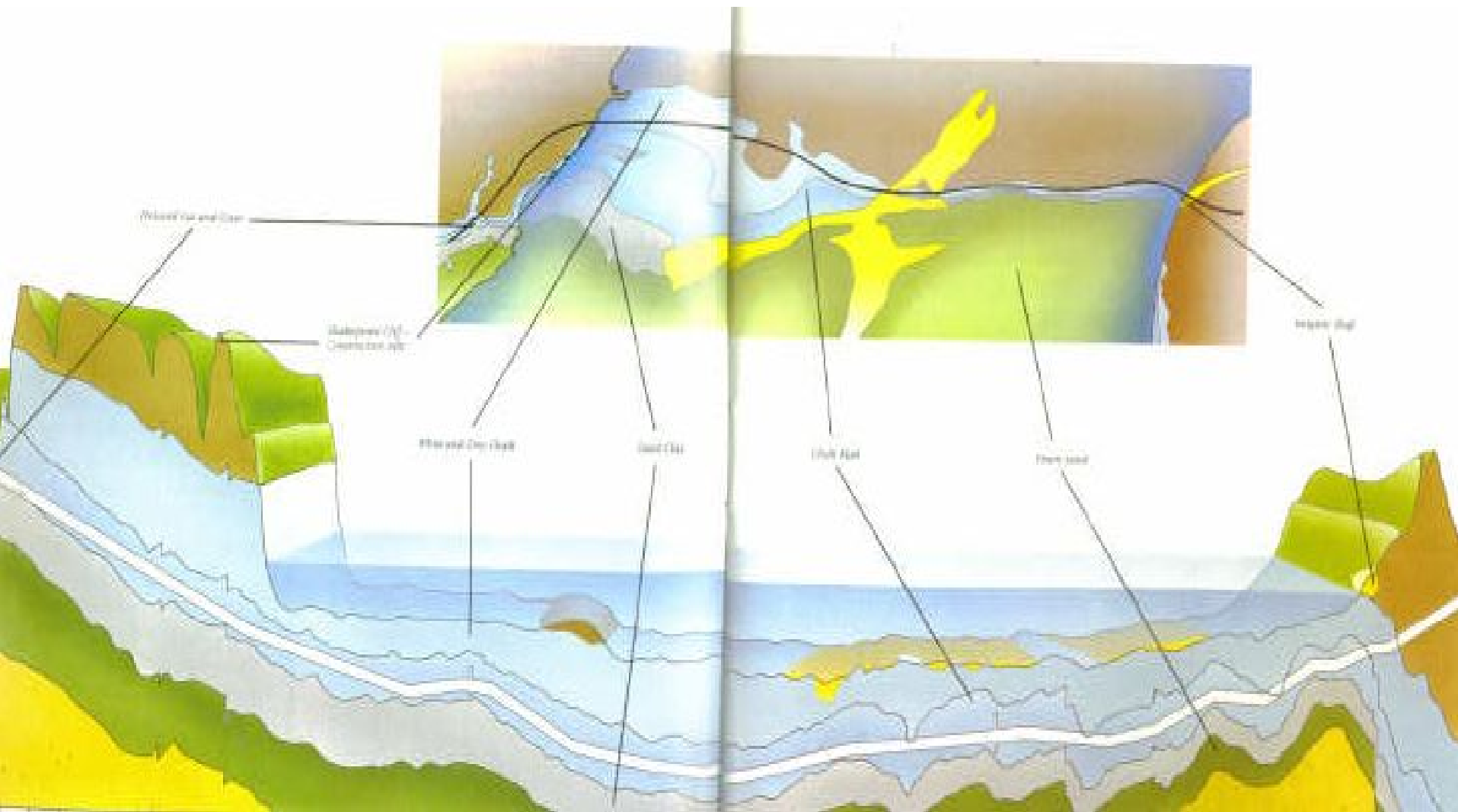
Of frogs legs and escargots

---- And men's scent!

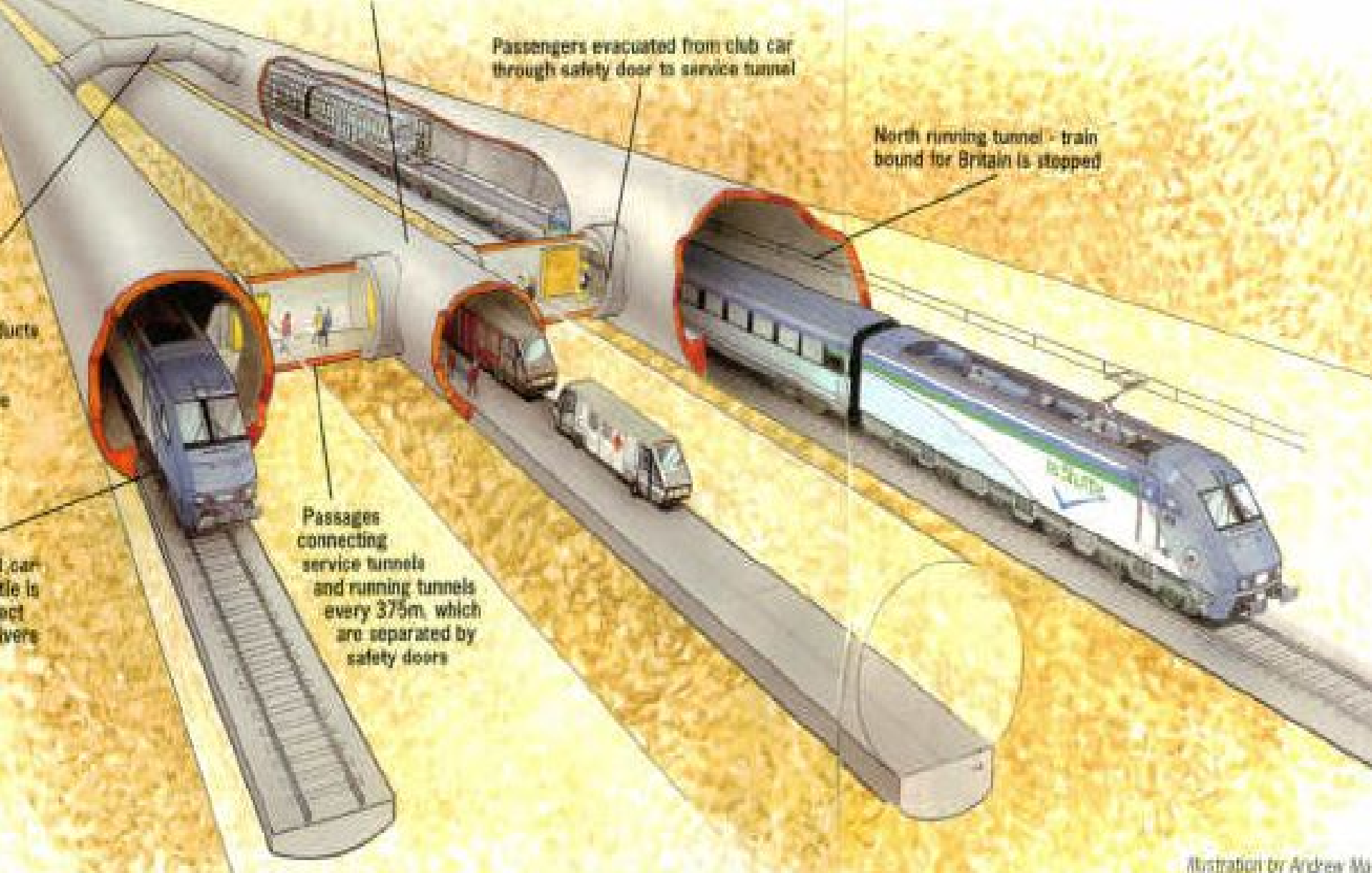


MOST ROAD TRAFFIC WILL REACH THE TUNNEL TERMINAL BY WAY OF THE M20



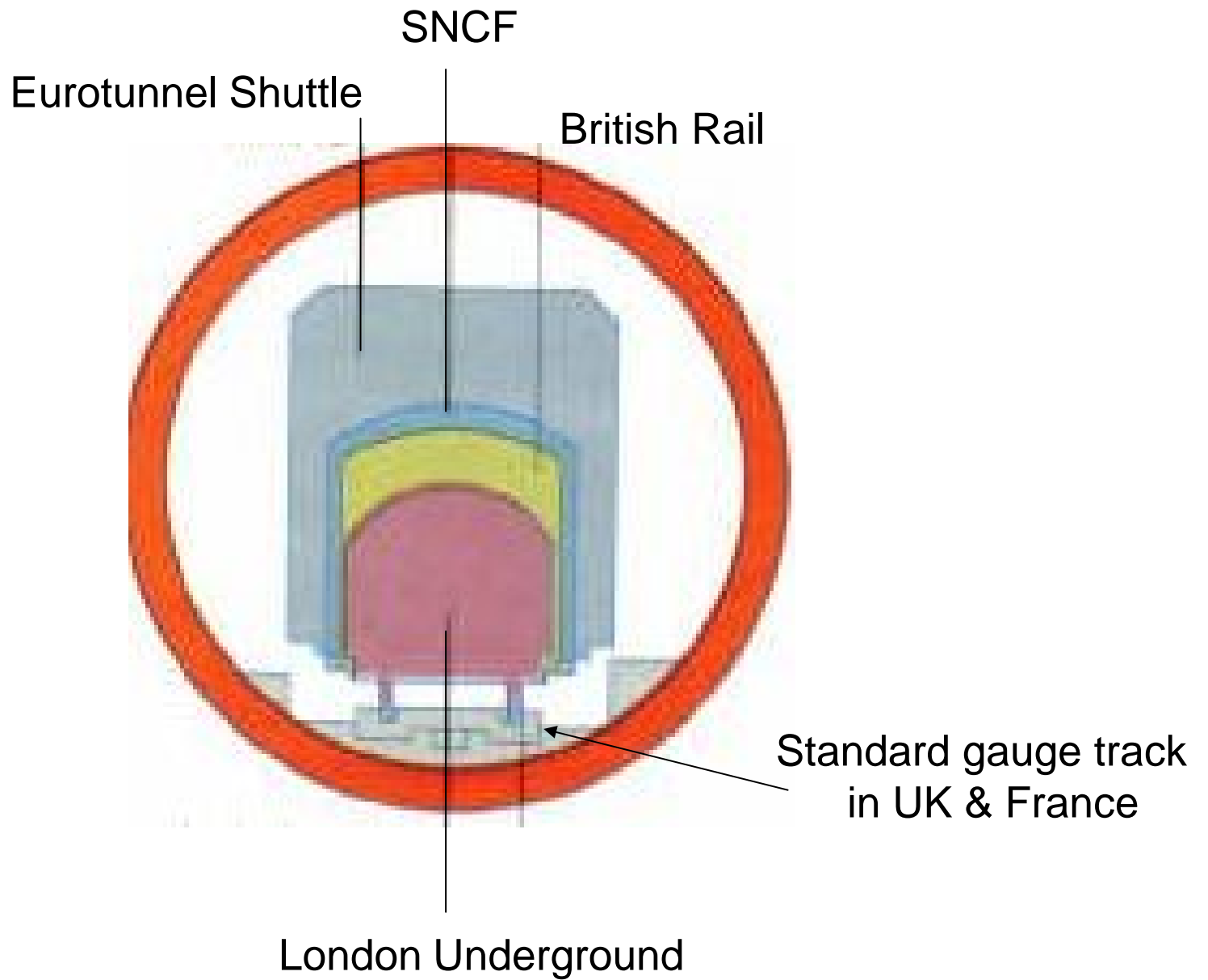


ROUTE THROUGH THE CHALK MARL



-
-

Three Tunnel Concept





- SHAKESPEARE CLIFF, DOVER
- Before the start of construction



**SHAKESPEARE CLIFF - DOVER
BEFORE START OF CONSTRUCTION**



TUNNEL CONSTRUCTION ENTRANCE – UK SIDE



RESTRICTED TUNNEL ACCESS – UK SIDE



ENTRANCE ADIT – UK SIDE



ERECTION OF BORING MACHINE HEAD



FRENCH TUNNEL ACCESS – GREEN FIELD SITE





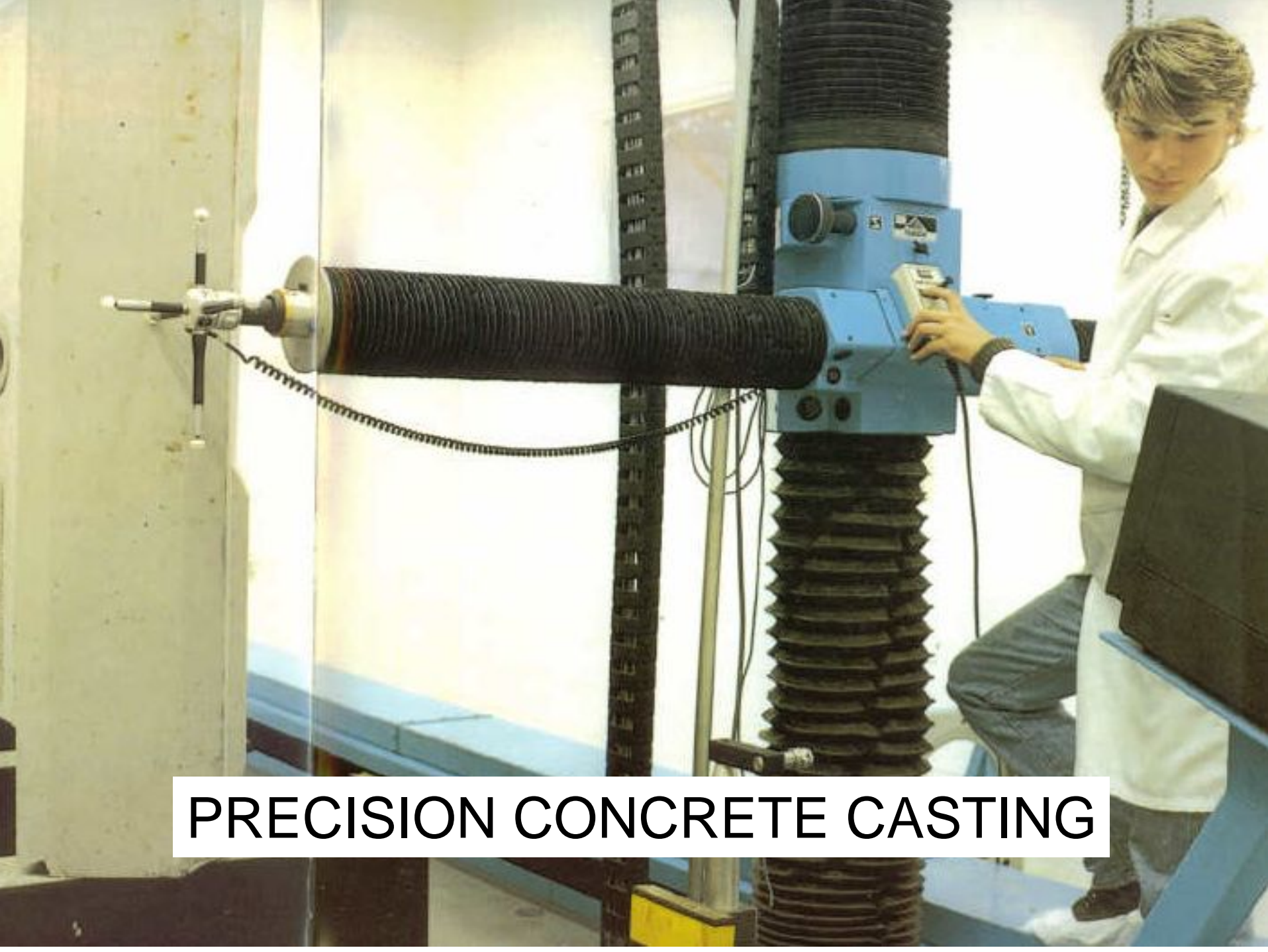
VIRGIN TUNNEL



TRY SWINGING A CAT HERE !



CONCRETE SEGMENT STACK



PRECISION CONCRETE CASTING



INSERTING A RING





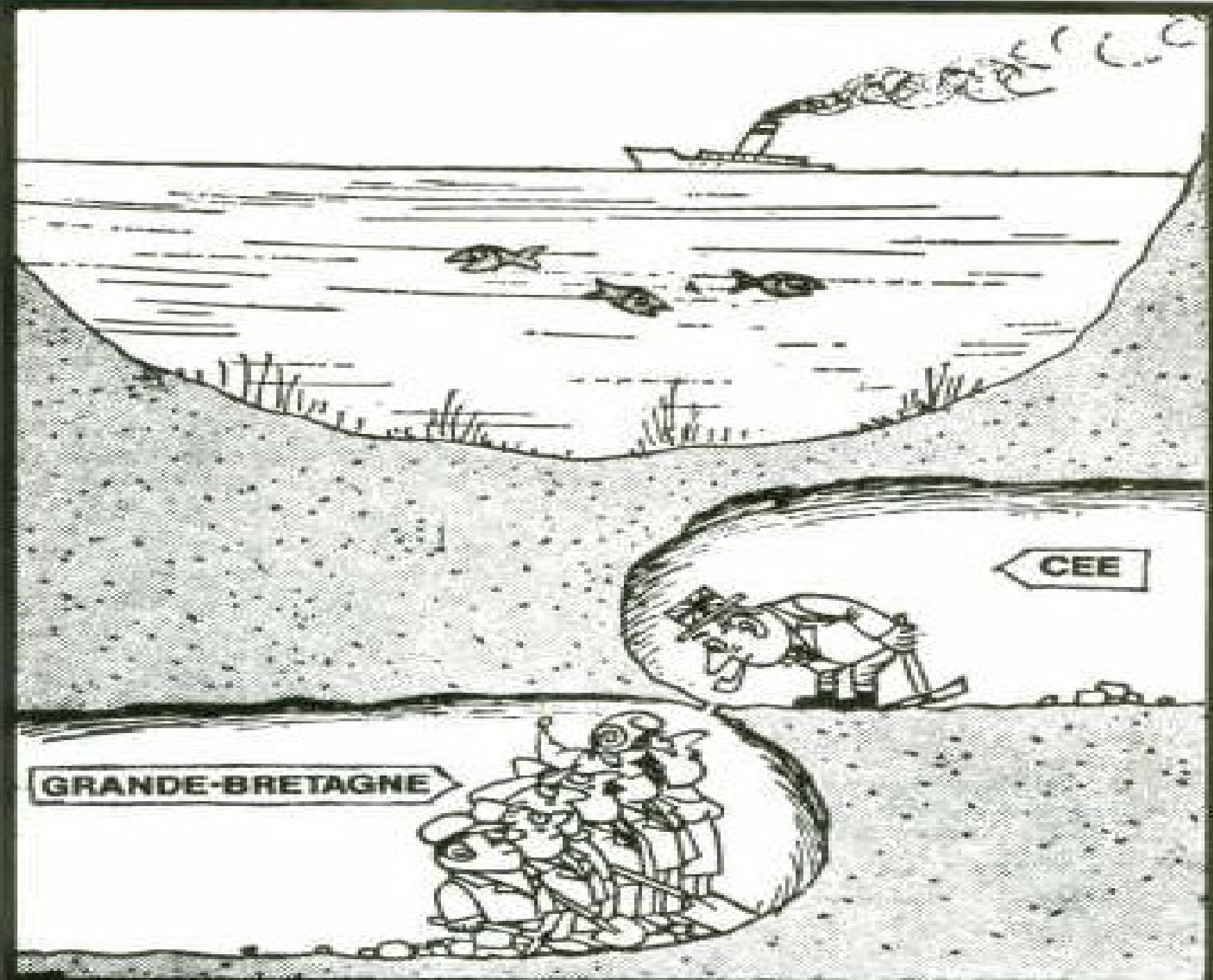
- **INSERTING A KEY SEGMENT**



- CAST IRON SEGMENTS

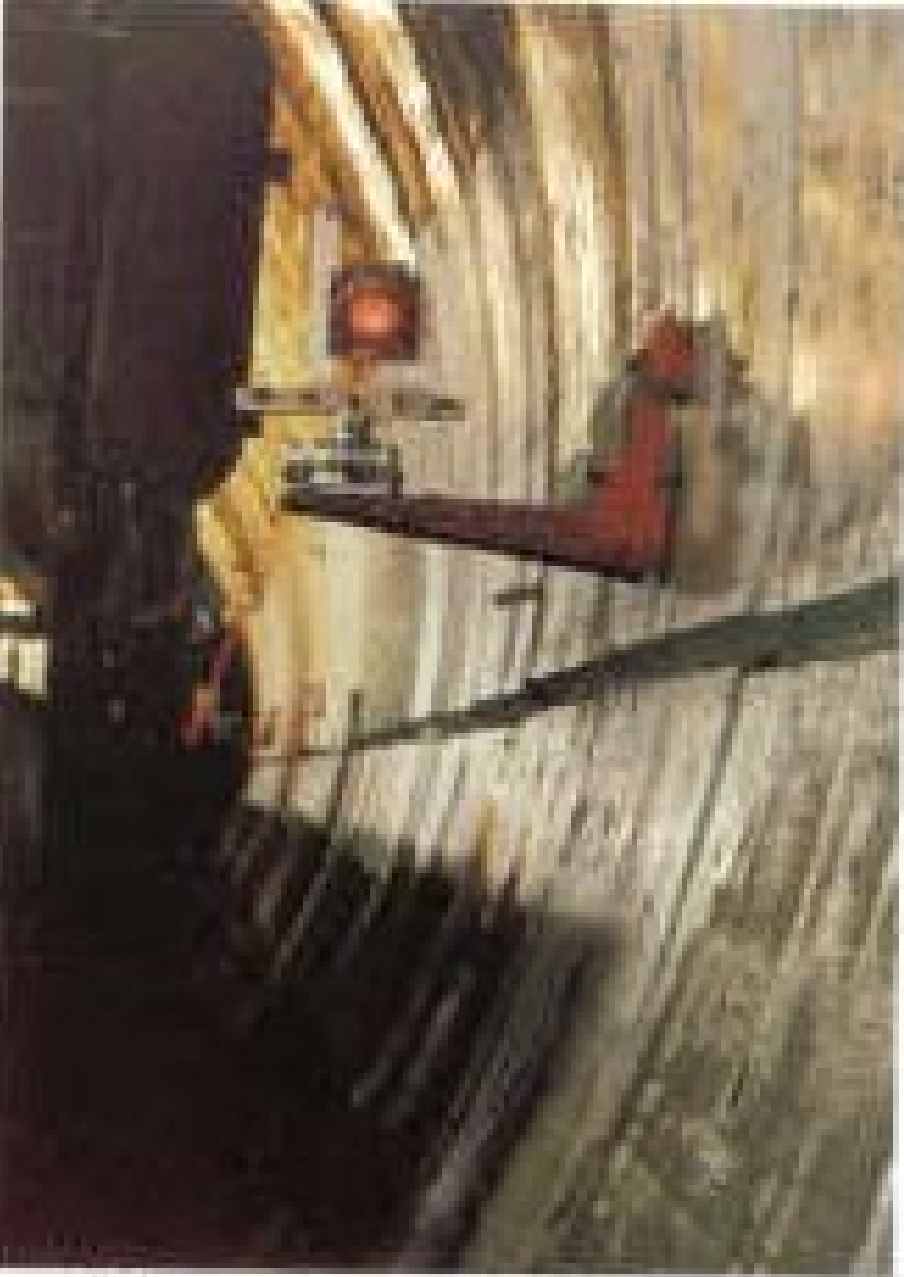


DESALINATION PLANT

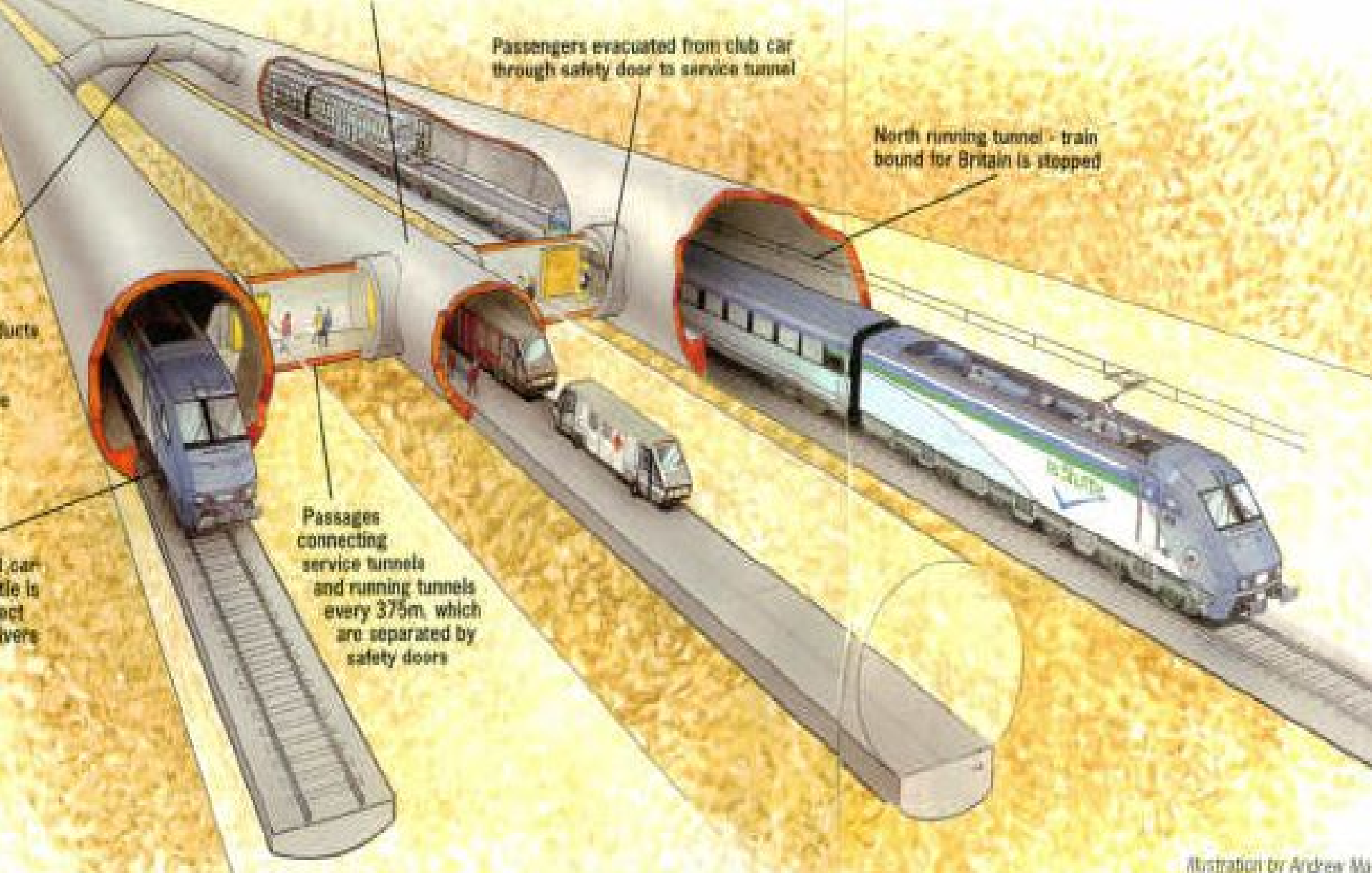


CEE

GRANDE-BRETAGNE

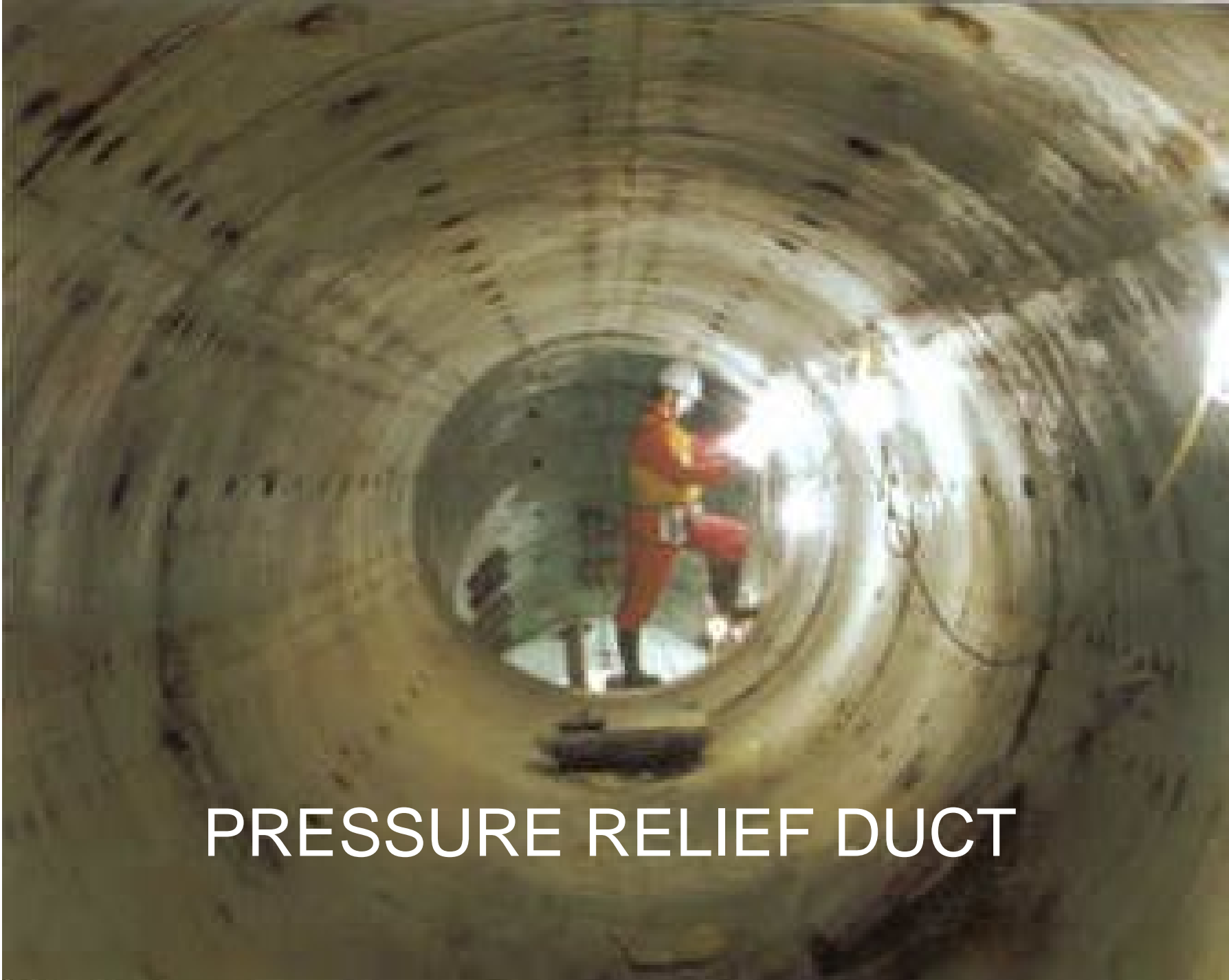


NAVIGATION BY LASER



-
-

Three Tunnel Concept



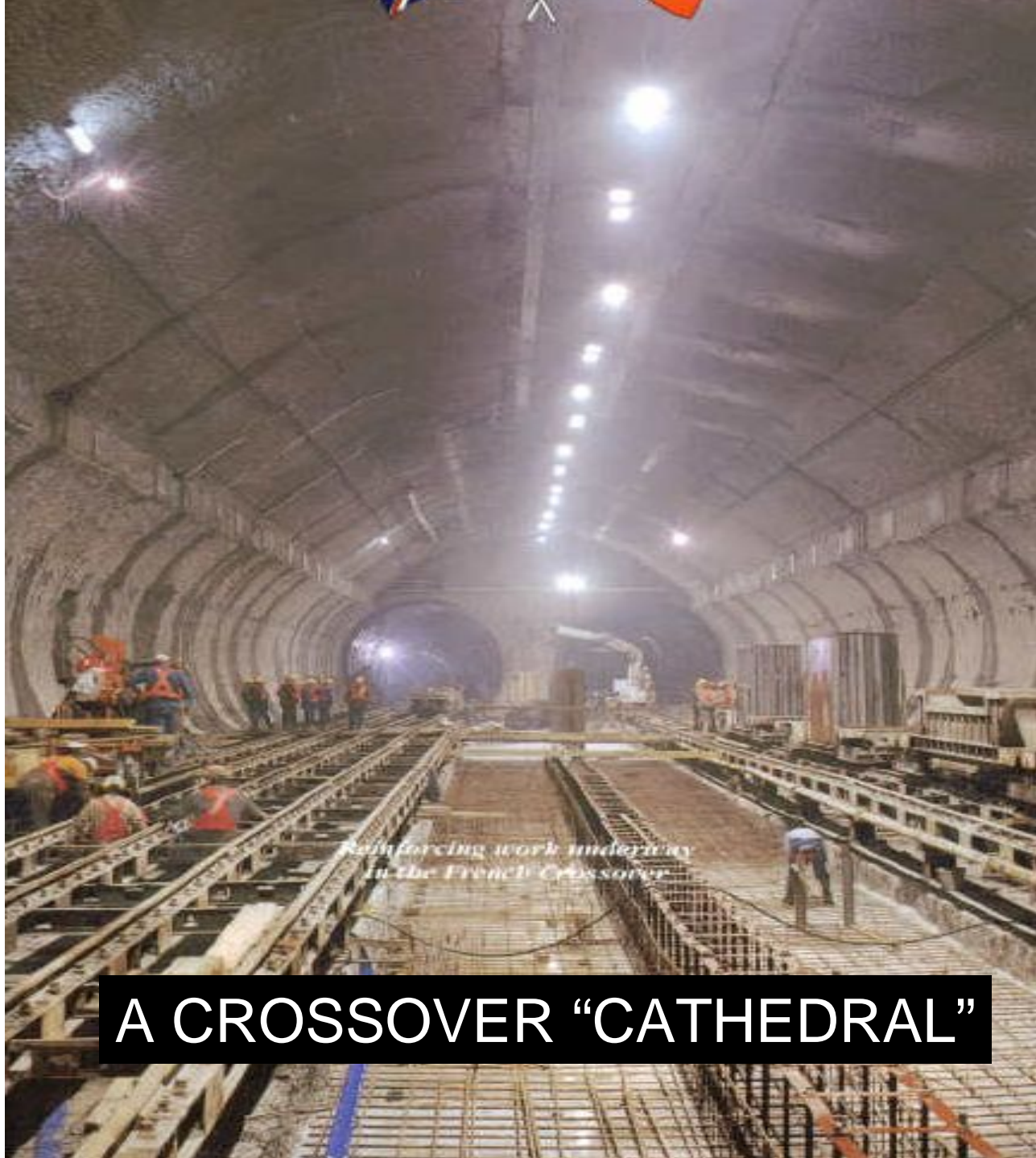
PRESSURE RELIEF DUCT



PRESSURE RELIEF DUCT – NON-RETURN VALVE

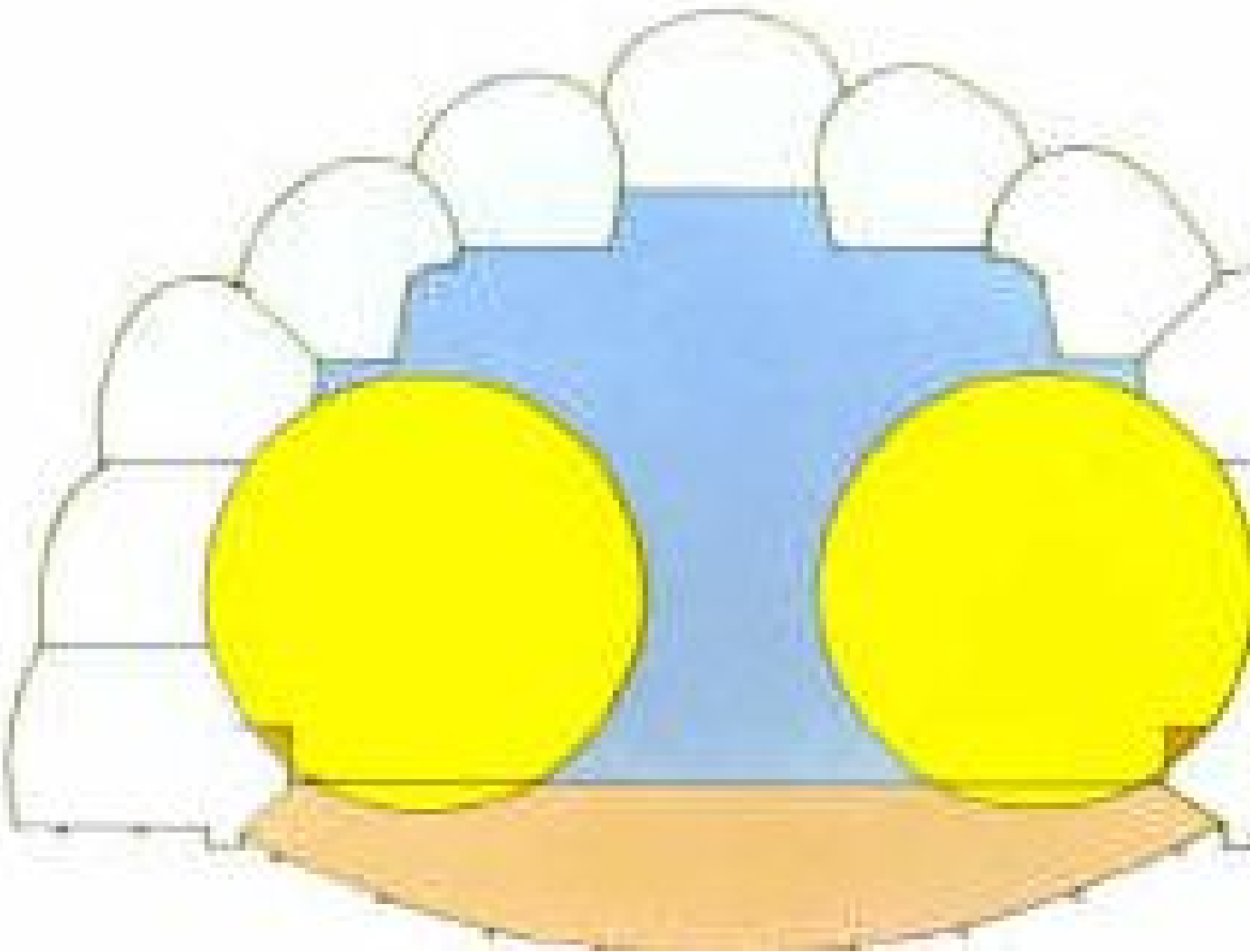


CROSS PASSAGE DOOR



*Reinforcing work underway
in the French Crossover*

A CROSSOVER “CATHEDRAL”



- CROSSOVER CAVERN CONSTRUCTION



BORING MACHINE BREAKTHROUGH



LAYING CROSSOVER TRACKS



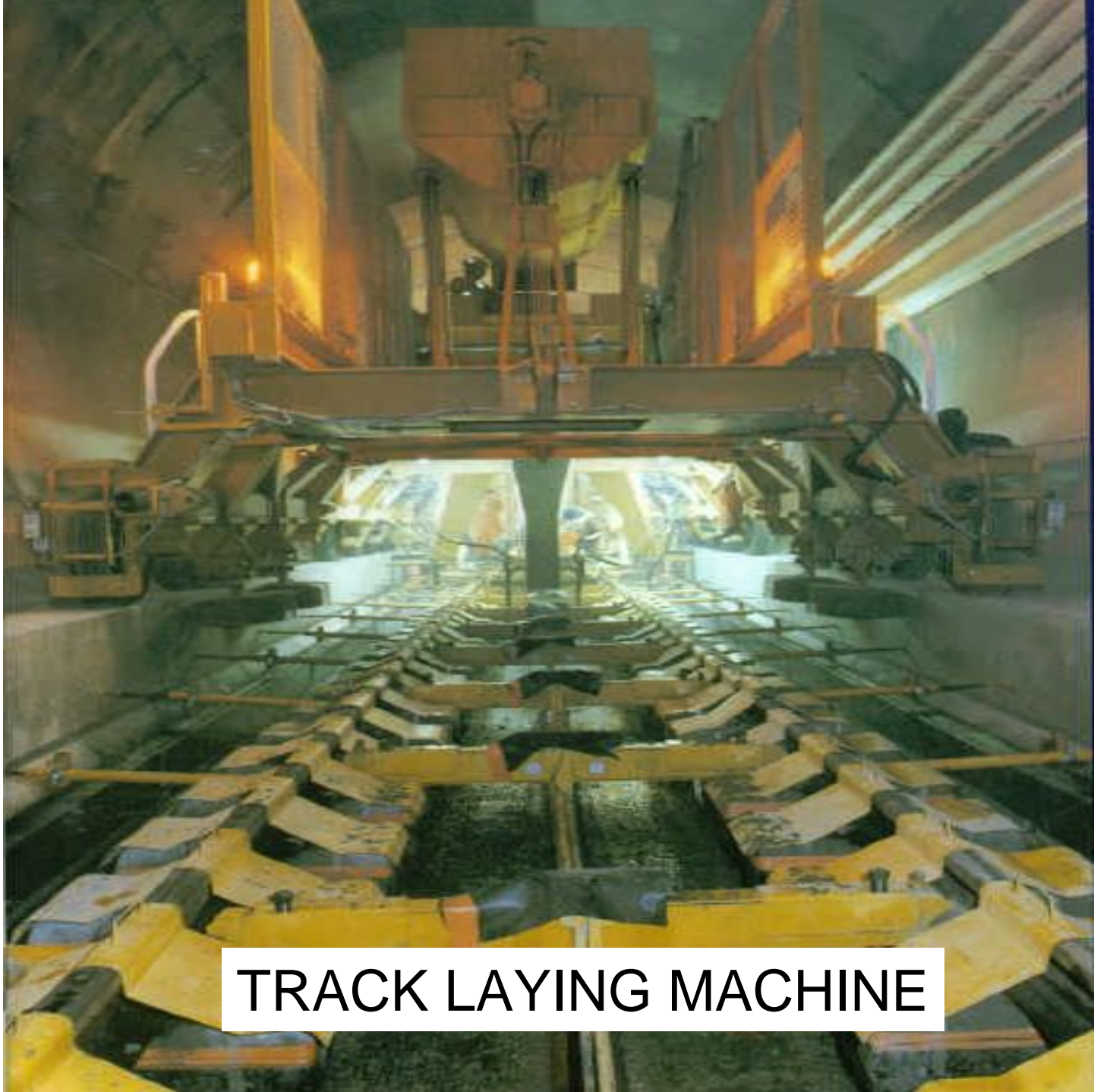
- Crossover Doors OPEN



CROSSOVER DOORS CLOSED



VIRGIN TUNNEL



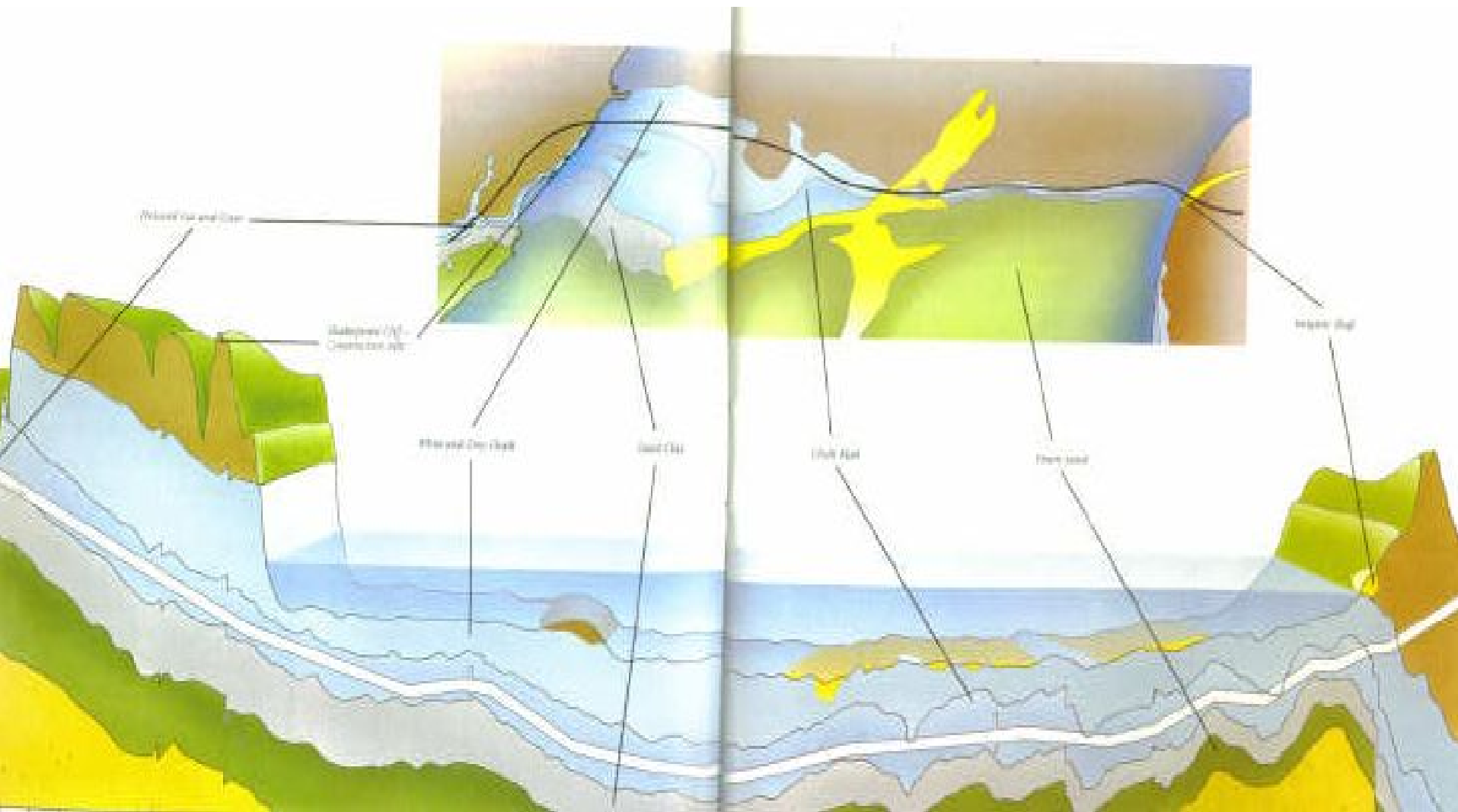
TRACK LAYING MACHINE



CLEANING TUNNEL AFTER CONSTRUCTION



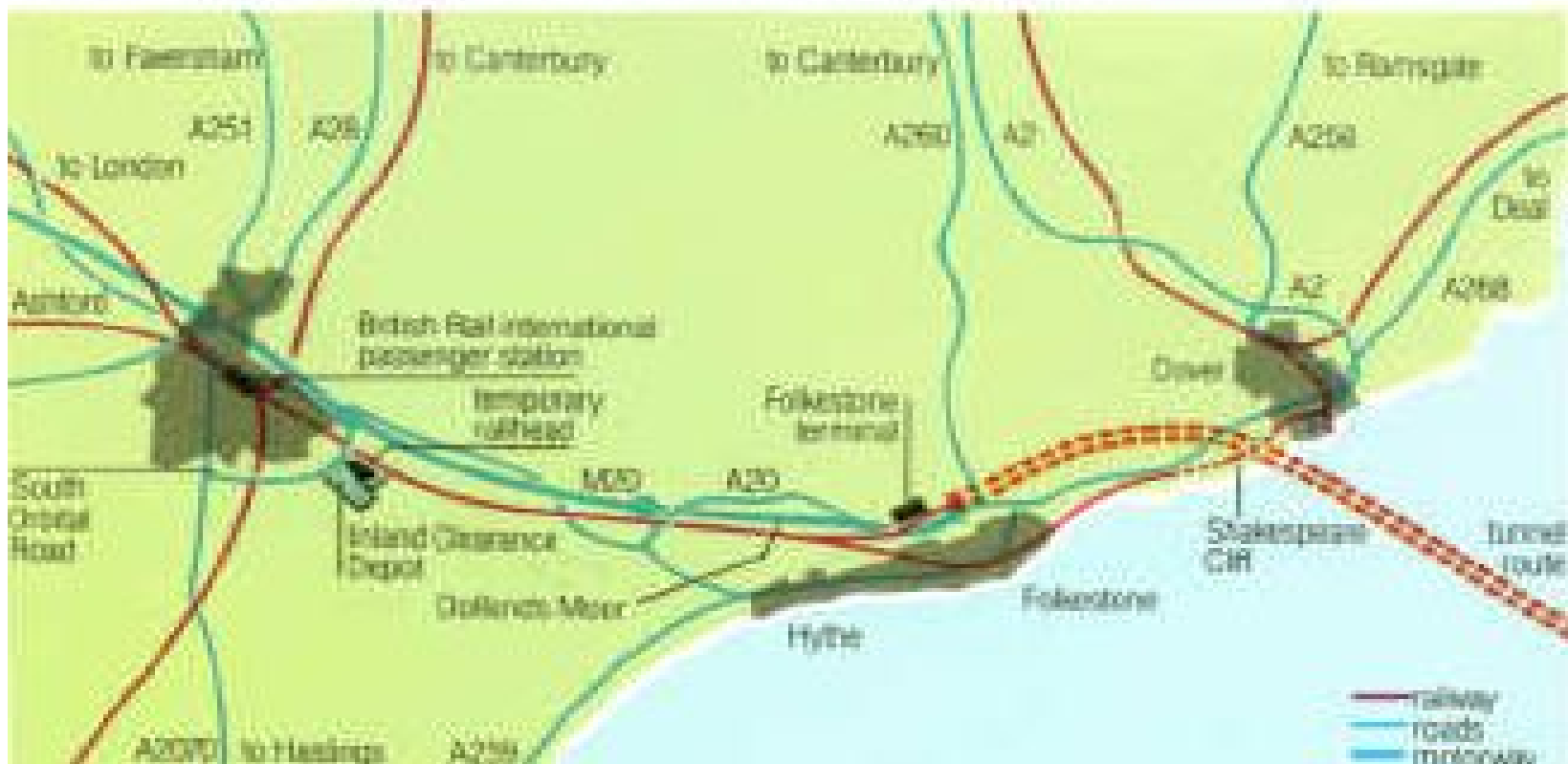
RIDING TO WORK



ROUTE THROUGH THE CHALK MARL



MOST ROAD TRAFFIC WILL REACH THE TUNNEL TERMINAL BY WAY OF THE M20





GREEN FIELD TERMINAL SITE



SAND DREDGERS – OFF HYTHE



800MM PIPE to PUMP GOODWIN SAND





TERMINAL SITE LEVELLED – BEFORE CONSTRUCTION



The sand martins' nests



FOLESTONE TERMINAL - COMPLETE



BIRD'S EYE VIEW of TERMINAL



EXTENSIVE FRENCH TERMINAL at SANGATTE



SEAWALL JACKUP BARGE



THE NEW GROUND



WHAT IT'S ALL ABOUT



A CAR/COACH WAGGON



A FREIGHT WAGGON

Thursday September 24th saw the official presentation to the world's press and the transportation industry of the wagons designed to carry heavy goods vehicles (HGV's) on the Eurotunnel shuttles. The event took place on the Folkestone Terminal.

In this, the first public outing for the wagons, two carriers and two loaders were coupled together on the rails between Overbridges 1 and 2 in order to demonstrate how HGV's would enter and exit the trains.

Two articulated lorries repeatedly drove on and off the wagons with an ease which impressed all present. Later driver Derek Mercer told the LINK. "It's a great system, very easy and very quick." This sentiment was echoed by his colleague Patrick Phillips who said: "Even the very first time, I went straight in with no problems whatsoever. It should be a great success."

The HGV wagons presently to be found on the UK Terminal were delivered specifically for the September launch. The vast majority of the total fleet of 270 (including Amenity Coaches) designed to service trucks travelling between the UK and France, are being delivered to Coquelles, as explained in the following article.





LOADING TRUCK CONFIGURATION



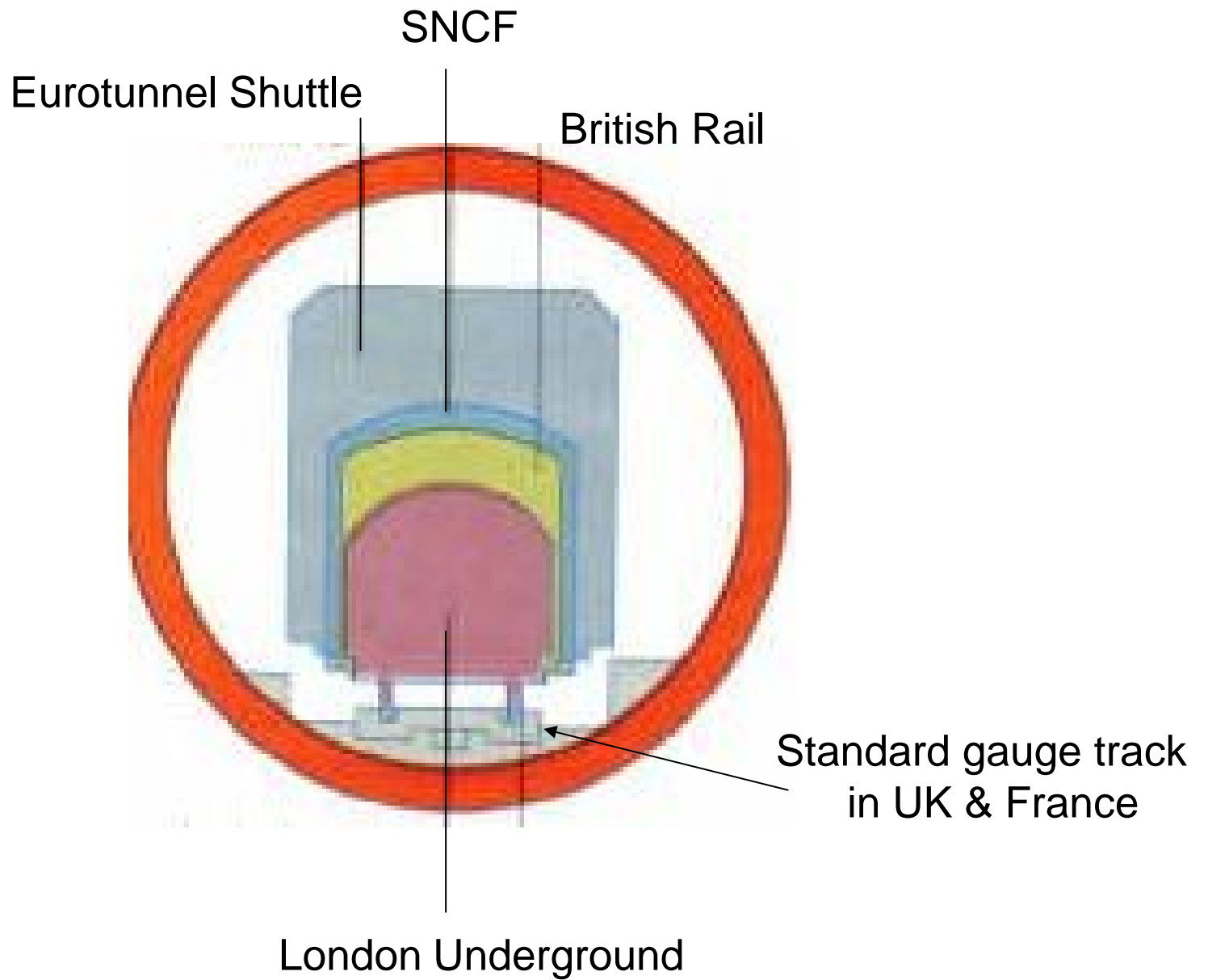
TRUCK LOADING



LOADING JACK



PLATFORM JACKING BEAMS





TERMINAL WIND BREAKS



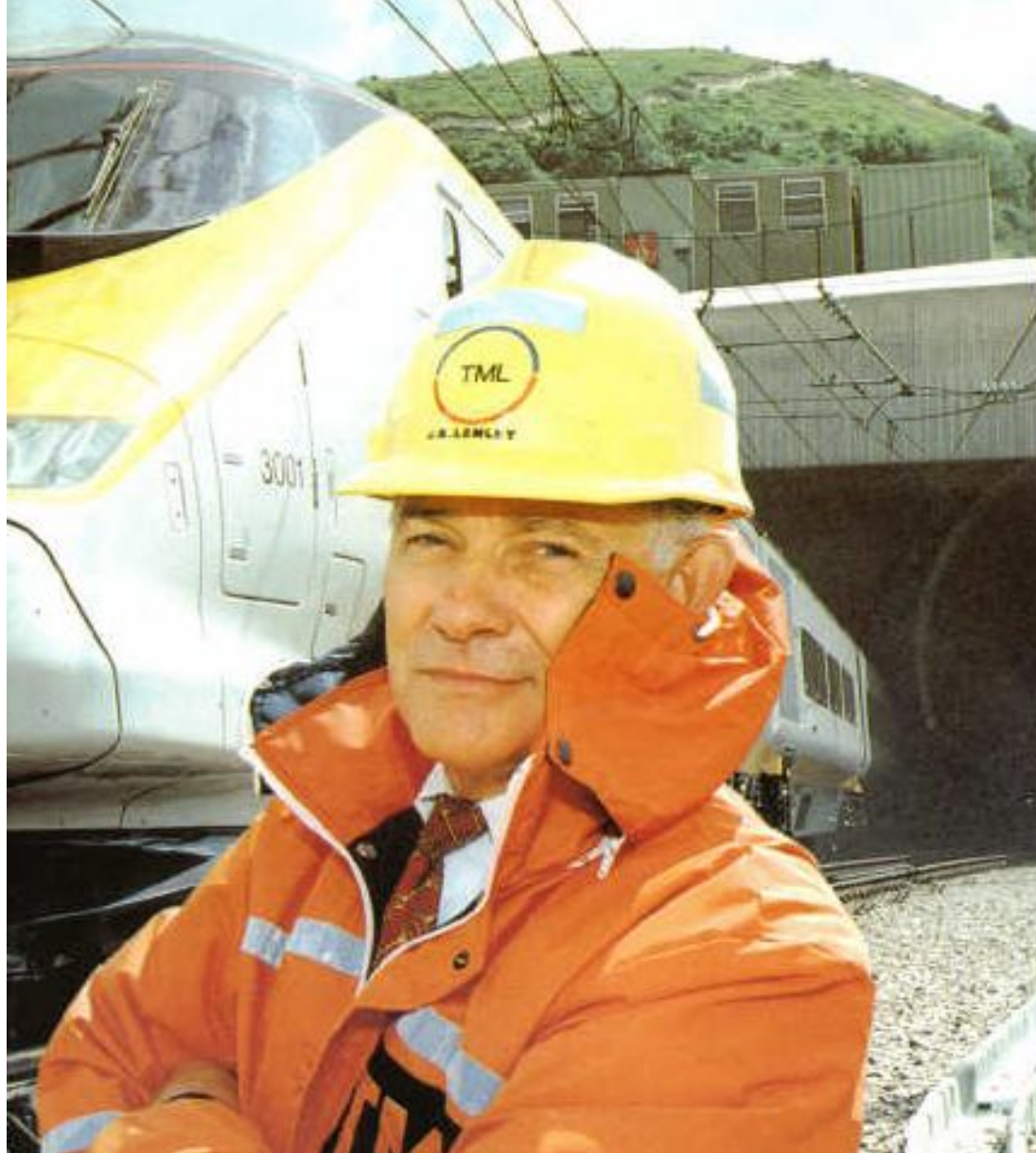
NOISE BARRIERS AROUND TERMINAL



TUNNEL COOLING PIPES



TUNNEL REFRIGERATION PLANT

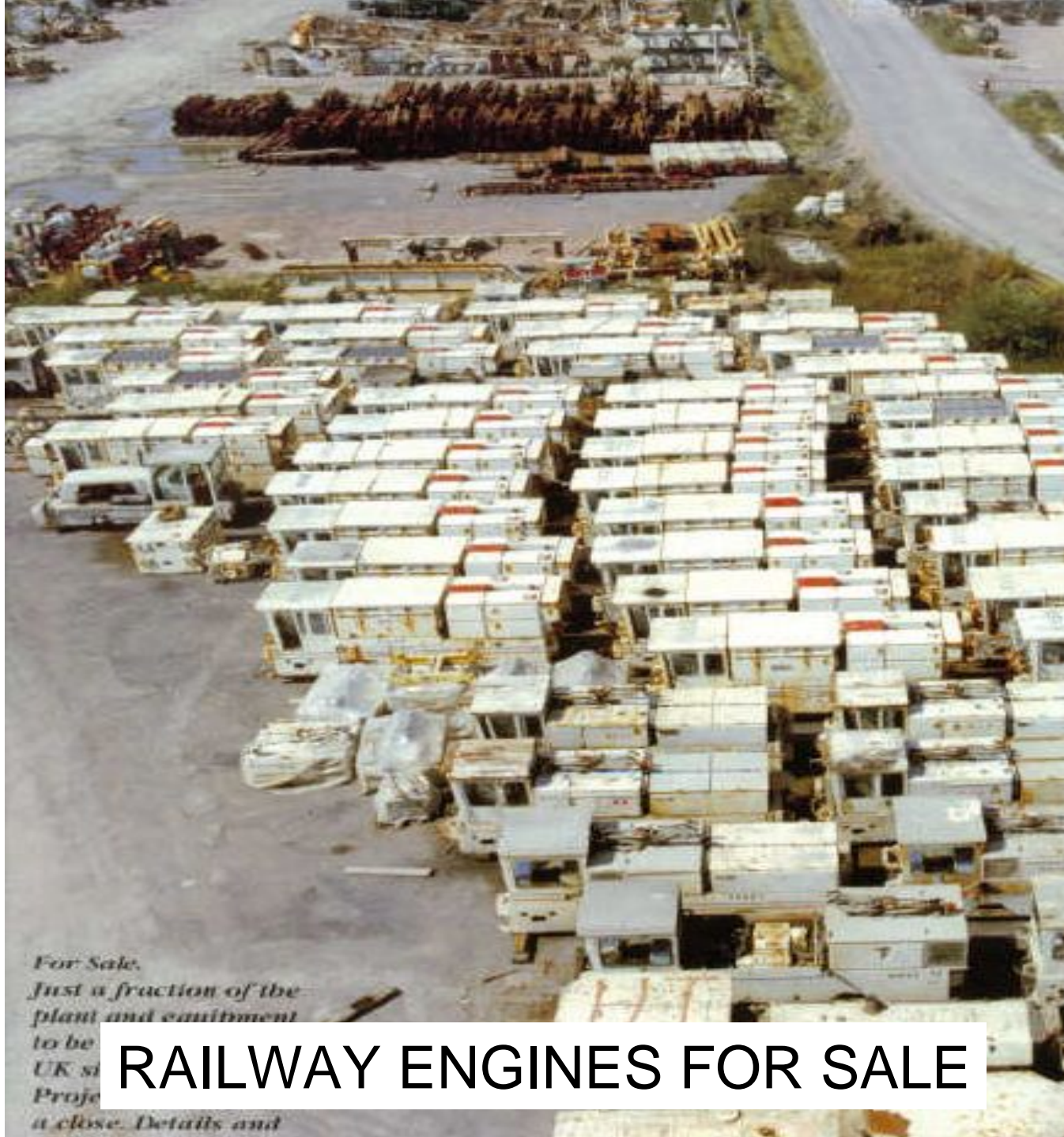


Chief Executive Jack Lemley





M20 BRIDGE CONSTRUCTION



*For Sale,
Just a fraction of the
plant and equipment
to be
UK s
Proje
a close. Details and*

RAILWAY ENGINES FOR SALE



MORE JUNK FOR SALE



ANYONE WANT TO DIG A HOLE?